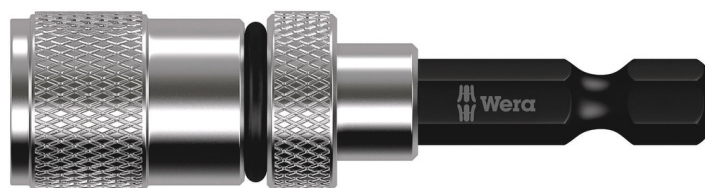


896/4/1 SB Bit Holder with adjustable depth-control stop, 1/4" x 50 mm

Bit holder with Adjustable Depth-Control Stop



EAN:	4013288178725	Size:	165x60x23 mm
Part number:	05073210001	Weight:	33 g
Article number:	896/4/1 SB SiS	Country of origin:	TW
		Customs tariff number:	84661038

- Aluminium sleeve, strong permanent magnet and spacer
- Suitable for the take-up of bits with 1/4" hex head drive
- Screwdriving depth can be infinitely adjusted
- Allows the flush-mounting of screws
- Fits power screwdrivers with take-up as per DIN ISO 1173-F 6.3

High quality spacer out of aluminium: the screwdriving depth can be infinitely adjusted and allows the flush-mounting of screws.

Web link

https://products.wera.de/en/bits_holders_adaptors_holders_adaptors_connectors_bit_holder_with_adjustable_depth-control_stop_896_4_1_sb_sis.html

Wera - 896/4/1 SB SiS
05073210001 - 4013288178725

Wera Werkzeuge GmbH
Korzter Straße 21-25
D-42349 Wuppertal
Tel: +49 (0)2 02 / 40 45-0
E-Mail: info@wera.de

896/4/1 SB Bit Holder with adjustable depth-control stop, 1/4" x 50 mm

Bit holder with Adjustable Depth-Control Stop

Set contents:



896/4/1

1 x 1/4" x 50 mm



Bit holder with adjustable depth stop



The screw installation depth can be infinitely adjusted and allows the desired degree of countersinking of the screws.

Web link

https://products.wera.de/en/bits_holders_adaptors_holders_adaptors_connectors_bit_holder_with_adjustable_depth-control_stop_896_4_1_sb_sis.html

Wera - 896/4/1 SB SiS
05073210001 - 4013288178725

Wera Werkzeuge GmbH
Korzter Straße 21-25
D-42349 Wuppertal
Tel: +49 (0)2 02 / 40 45-0
E-Mail: info@wera.de